

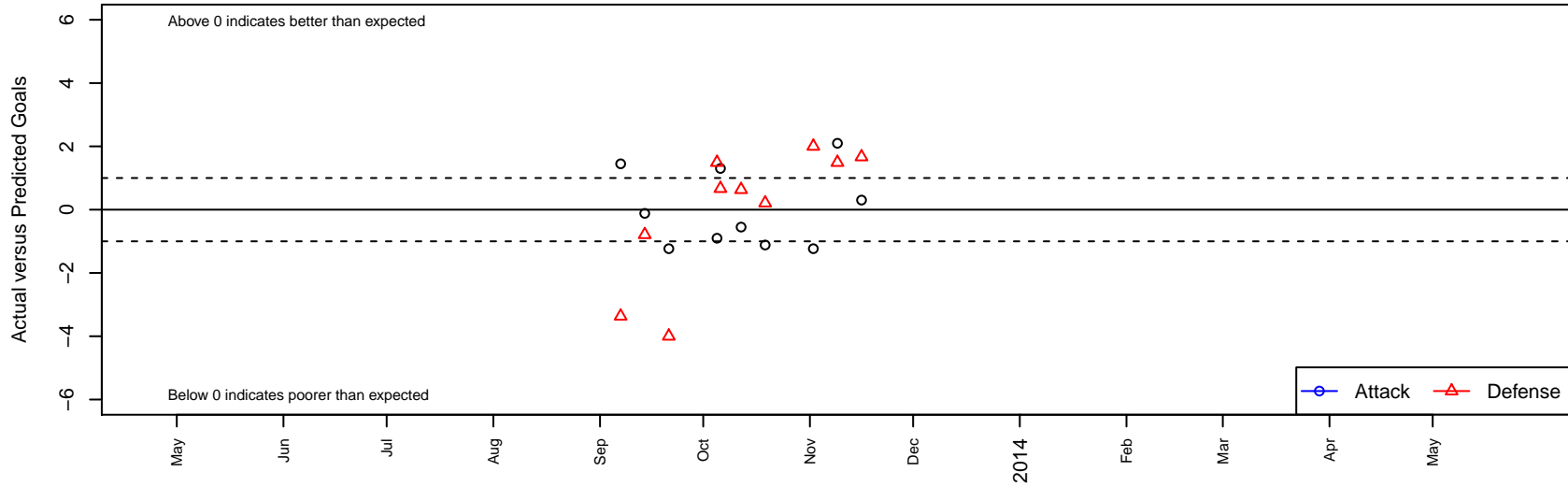
San Ramon 02 Azuri G01

, CAN
 G01 total strength=811
 attack=1.08 defense=1.01
 alt names used:
 San Ramon 02 Azuri G01
 San Ramon AZURI 02G

Venues played:
 NorCal Premier F11 – Region 3–4 U12



San Ramon 02 Azuri G01
 Dots are actual minus expected GF (blue circles) and GA (red triangles).
 Blue line is smoothed change in attack strength. Red is smoothed change in defense strength.



| | date | home | | away | | venue | pred.home | pred.away |
|------|-------------|--------------------------------|---|--------------------------------|---|-------------------------------------|------------------|------------------|
| 6575 | 2013-11-16 | San Ramon 02 Azuri G01 | 1 | Diablo FC G01 | 0 | NorCal Premier F11 – Region 3-4 U12 | 0.70 | 1.67 |
| 6470 | 2013-11-09 | EBU Bay Oaks Gold Bombers G01 | 0 | San Ramon 02 Azuri G01 | 3 | NorCal Premier F11 – Region 3-4 U12 | 1.49 | 0.90 |
| 6327 | 2013-11-02 | San Ramon 02 Azuri G01 | 0 | Livermore Fusion SC Maroon G01 | 0 | NorCal Premier F11 – Region 3-4 U12 | 1.23 | 2.00 |
| 6013 | 2013-10-19 | ACC Mavericks Dynamite G01 | 2 | San Ramon 02 Azuri G01 | 0 | NorCal Premier F11 – Region 3-4 U12 | 2.21 | 1.12 |
| 5853 | 2013-10-12 | San Ramon 02 Azuri G01 | 0 | Mustang Blast G01 | 1 | NorCal Premier F11 – Region 3-4 U12 | 0.55 | 1.63 |
| 5780 | 2013-10-06 | Diablo FC G01 | 1 | San Ramon 02 Azuri G01 | 2 | NorCal Premier F11 – Region 3-4 U12 | 1.67 | 0.70 |
| 5666 | 2013-10-05 | San Ramon 02 Azuri G01 | 0 | EBU Bay Oaks Gold Bombers G01 | 0 | NorCal Premier F11 – Region 3-4 U12 | 0.90 | 1.49 |
| 5362 | 2013-09-21 | Livermore Fusion SC Maroon G01 | 6 | San Ramon 02 Azuri G01 | 0 | NorCal Premier F11 – Region 3-4 U12 | 2.00 | 1.23 |
| 5195 | 2013-09-14 | San Ramon 02 Azuri G01 | 1 | ACC Mavericks Dynamite G01 | 3 | NorCal Premier F11 – Region 3-4 U12 | 1.12 | 2.21 |
| 5042 | 2013-09-07 | Mustang Blast G01 | 5 | San Ramon 02 Azuri G01 | 2 | NorCal Premier F11 – Region 3-4 U12 | 1.63 | 0.55 |